

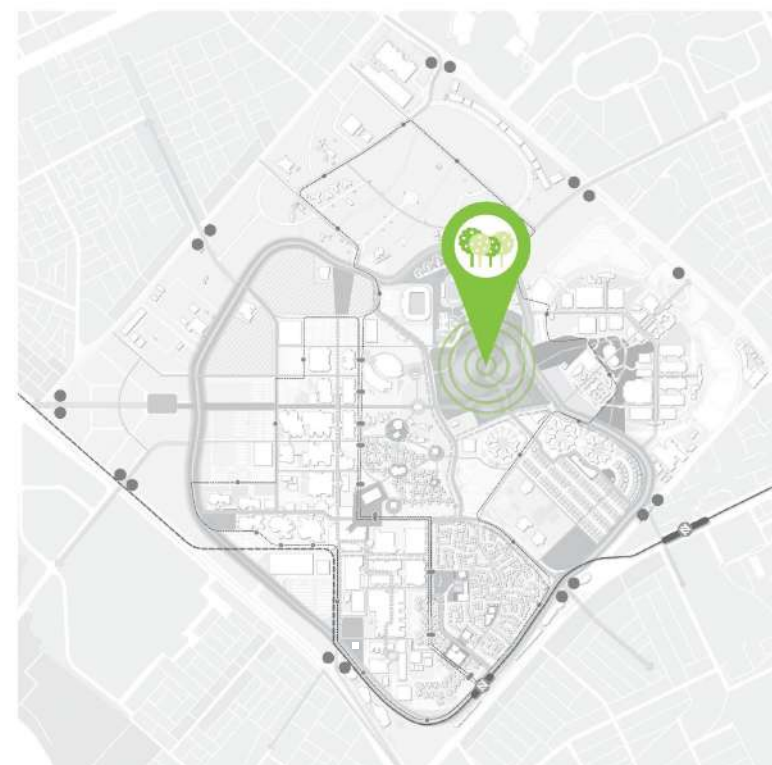
# Landscape Spatial Study

## Central Park

Estimated Site Area: 250,000m<sup>2</sup>  
 Park Category: City Park

The Central Park is the largest park within the university. It is located within the core of the KSU. The Central Park will provide a lot of amenities like Amphitheatre and Sports Zone, Outdoor study area, Gathering spaces etc. according to the adjacent vicinity. The park is categorized as a City Park because of its size and character, this park will not only cater KSU but also the outside KSU and the surrounding area.

- |   |   |
|---|---|
| <b>1</b> Arrival Plaza                  | <b>12</b> Fitness Area                        |
| <b>2</b> Central Plaza                  | <b>13</b> Mosque                              |
| <b>3</b> Central fountain               | <b>14</b> Outdoor Study Area                  |
| <b>4</b> Terrace Lawn                   | <b>15</b> Nature groove                       |
| <b>5</b> Amphitheatre / Courtyard steps | <b>16</b> Gathering / Barbeque & Picnic Area  |
| <b>6</b> Fitness track                  | <b>17</b> Play Area (for different age group) |
| <b>7</b> Kiosk & Café                   |   |
| <b>8</b> Retail hubs                    |   |
| <b>9</b> Community Lawn                 |   |
| <b>10</b> Skate Park / Pump Track       |   |
| <b>11</b> Sports Courts                 |   |



# Landscape Spatial Study

## Park Programming - City Park

- **Central Park** – This will be the largest park in the KSU campus. The park will be classified as a City Park

### Adapting the Programme by Size of the Park

2.2.11.1

|                                    |  | NATURAL CITY PARKS | URBAN CITY PARKS             |                               |                                 |                          |
|------------------------------------|--|--------------------|------------------------------|-------------------------------|---------------------------------|--------------------------|
|                                    |  | No size limit      | 50,000-100,000m <sup>2</sup> | 100,000-300,000m <sup>2</sup> | 300,000-1,000,000m <sup>2</sup> | >1,000,000m <sup>2</sup> |
| MAIN ENTRANCE / ARRIVAL SPACE      | Visual & Physical Connectivity/Context   | ✓                  | ✓                            | ✓                             | ✓                               | ✓                        |
|                                    | Entry plaza/Arrival space                | ✓                  | ✓                            | ✓                             | ✓                               | ✓                        |
|                                    | Secondary entrances                      | ✓                  | ✓                            | ✓                             | ✓                               | ✓                        |
|                                    | Dedicated parking (off street)           | ✓                  | ✓                            | ✓                             | ✓                               | ✓                        |
|                                    | Bicycle parking                          | ✓                  | ✓                            | ✓                             | ✓                               | ✓                        |
| CIRCULATION                        | Primary path network                     | ✓                  | ✓                            | ✓                             | ✓                               | ✓                        |
|                                    | Secondary/Tertiary path network          | ✓                  | ✓                            | ✓                             | ✓                               | ✓                        |
|                                    | Emergency vehicle circulation            | ✓                  | ✓                            | ✓                             | ✓                               | ✓                        |
|                                    | Shared bicycle track/ Footpath           | ✓                  | ✓                            | ✓                             | ✓                               | ✓                        |
|                                    | Jogging track                            | ○                  | ○                            | ✓                             | ✓                               | ✓                        |
| AMENITIES                          | Toilet block                             | ✓                  | ✓                            | ✓                             | ✓                               | ✓                        |
|                                    | Ablution with prayer room                | ✓                  | ✓                            | ✓                             | ✓                               | ✓                        |
|                                    | Small kiosk (8-15 m <sup>2</sup> )       | ✓                  | ✓                            | ✓                             | ✓                               | ✓                        |
|                                    | Large kiosk (15-50 m <sup>2</sup> )      | ○                  | ○                            | ○                             | ○                               | ○                        |
|                                    | Public art                               | ○                  | ○                            | ✓                             | ✓                               | ✓                        |
| GENERAL ACTIVITIES ACTIVE (part 1) | Play <2-5 yrs old                        | ○                  | ✓                            | ✓                             | ✓                               | ✓                        |
|                                    | Play 5-12 yrs old                        | ○                  | ✓                            | ✓                             | ✓                               | ✓                        |
|                                    | Play +12 yrs old                         | ○                  | ✓                            | ✓                             | ✓                               | ✓                        |
|                                    | Multi-use games area (MUGA) <sup>1</sup> | ✗                  | ○                            | ✓                             | ✓                               | ✓                        |
|                                    | Half basketball court                    | ✗                  | ○                            | ✓                             | ✓                               | ✓                        |
|                                    | Soccer pitch 7x7                         | ✗                  | ○                            | ✓                             | ✓                               | ✓                        |
|                                    | Cricket net                              | ✗                  | ○                            | ○                             | ○                               | ○                        |
| Outdoor gym/Fitness trail/Station  | ○  | ○                  | ○                            | ✓                             | ✓                               |                          |
| GENERAL ACTIVITIES ACTIVE (part 2) | Games area <sup>2</sup>                  | ○                  | ✓                            | ✓                             | ✓                               | ✓                        |
|                                    | Skate park                               | ✗                  | ○                            | ○                             | ○                               | ○                        |
|                                    | Parkour play                             | ✗                  | ○                            | ○                             | ○                               | ○                        |
|                                    | Basketball court                         | ✗                  | ○                            | ○                             | ○                               | ○                        |
|                                    | Picnic                                   | ✓                  | ✓                            | ✓                             | ✓                               | ✓                        |
| GENERAL ACTIVITIES PASSIVE         | BBQ area singles                         | ✓                  | ✓                            | ✓                             | ✓                               | ✓                        |
|                                    | BBQ area grouped                         | ✓                  | ✓                            | ✓                             | ✓                               | ✓                        |
|                                    | Water feature/ Water play                | ○                  | ○                            | ✓                             | ✓                               | ✓                        |
|                                    | Clustered seating                        | ✓                  | ✓                            | ✓                             | ✓                               | ✓                        |
|                                    | Themed garden <sup>3</sup>               | ○                  | ✓                            | ✓                             | ✓                               | ✓                        |
|                                    | Lawn area                                | ✗                  | ✓                            | ✓                             | ✓                               | ✓                        |
|                                    | Women/child area                         | ○                  | ✓                            | ✓                             | ✓                               | ✓                        |
|                                    | Community garden/ Food garden            | ✗                  | ✗                            | ✗                             | ✗                               | ✗                        |
|                                    | Nursery                                  | ○                  | ✓                            | ✓                             | ✓                               | ✓                        |
|                                    | Central plaza / Event space              | ✓                  | ✓                            | ✓                             | ✓                               | ✓                        |
| Secondary plaza                    | ✓  | ✓                  | ✓                            | ✓                             | ✓                               |                          |
| ECO ACTIVITY                       | Natural habitat area                     | ✓                  | ○                            | ○                             | ○                               | ○                        |
|                                    | Maintenance storage area                 | ✓                  | ✓                            | ✓                             | ✓                               | ✓                        |
| MAINTENANCE                        | Maintenance compound                     | ✓                  | ✓                            | ✓                             | ✓                               | ✓                        |
|                                    | Maintenance pathway                      | ✓                  | ✓                            | ✓                             | ✓                               | ✓                        |

Table 3 - City Park Programme - Adapting programme by size of the park - Typical elements (part 2 of 2)

- ✓ Should be considered - Appropriate for context
- Could be included - Subject to validation of the catchment and size of park
- ✗ Not required based on park size

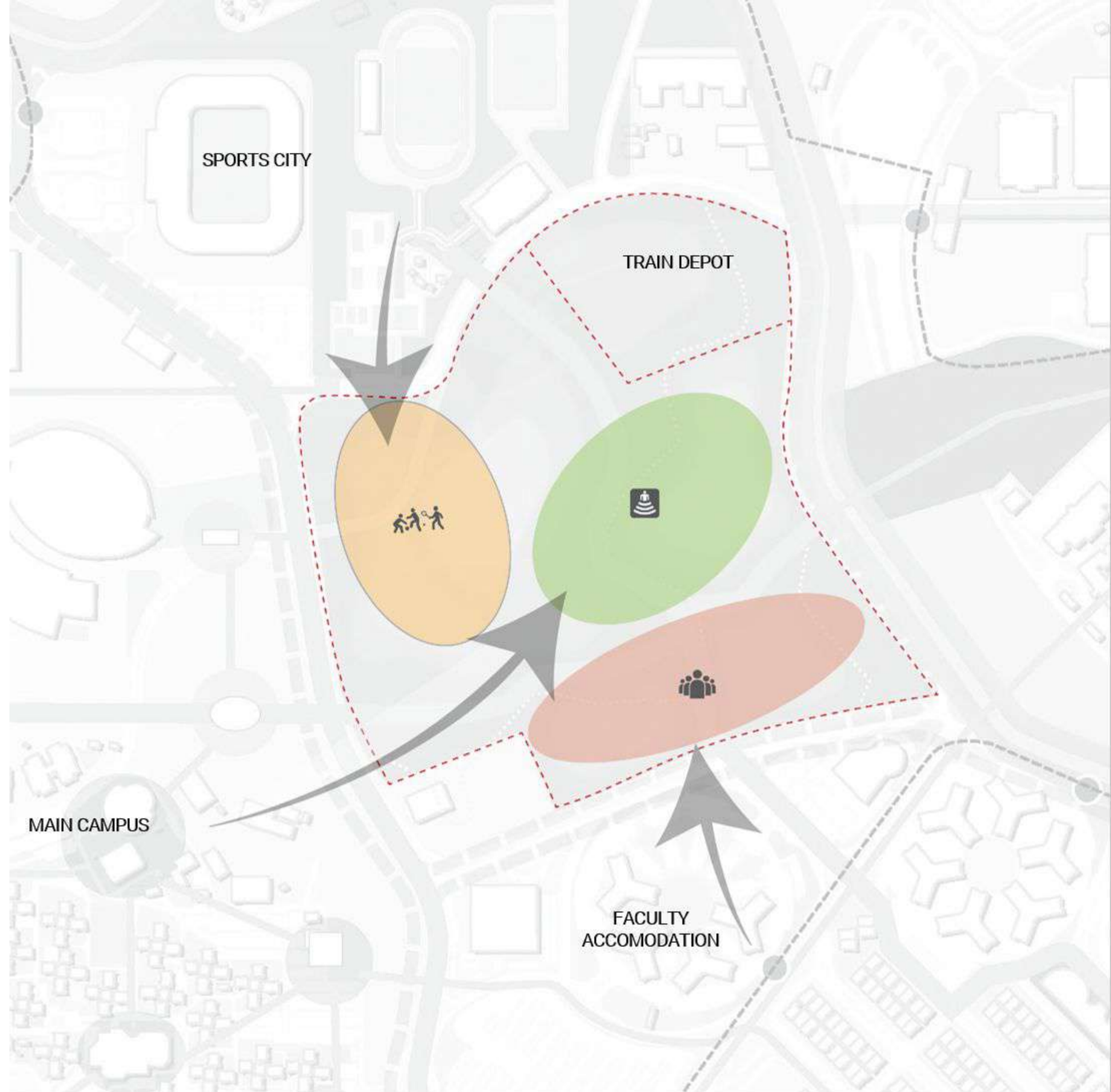
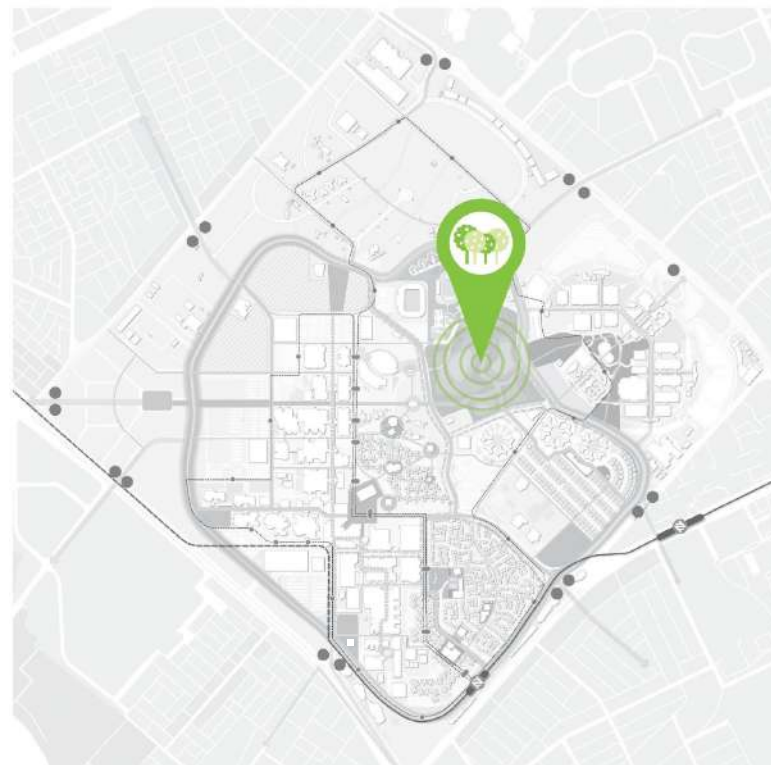
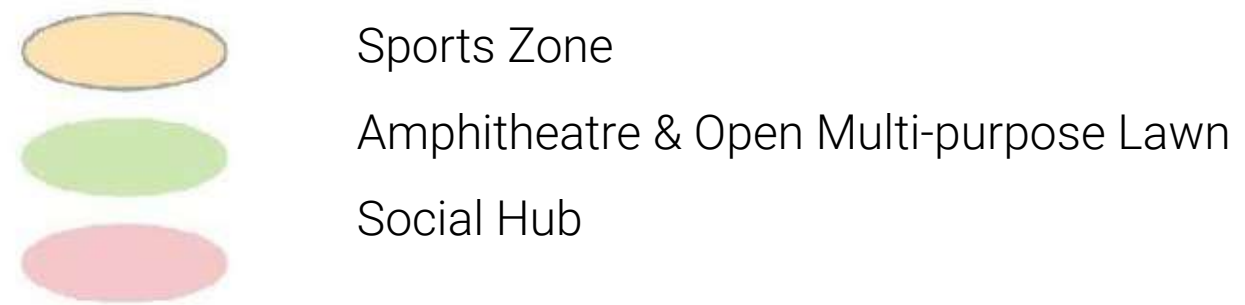
<sup>1</sup> MUGA to include multiple ball sports.  
<sup>2</sup> Games area could include table tennis, board games.  
<sup>3</sup> Themed play could include secret garden, art garden, kinetic garden, sound garden.

# Landscape Spatial Study

## Central Park

### PARK ZONING DIAGRAM

The 3 major zones for the Central Park will be integrated with the adjacent surrounding. The Sports Zone which will be the extended area of the Sports City, The Amphitheatre & Multi-purpose Area for adjacent KSU Campus and the Social Hub which is adjacent to the faculty housing.



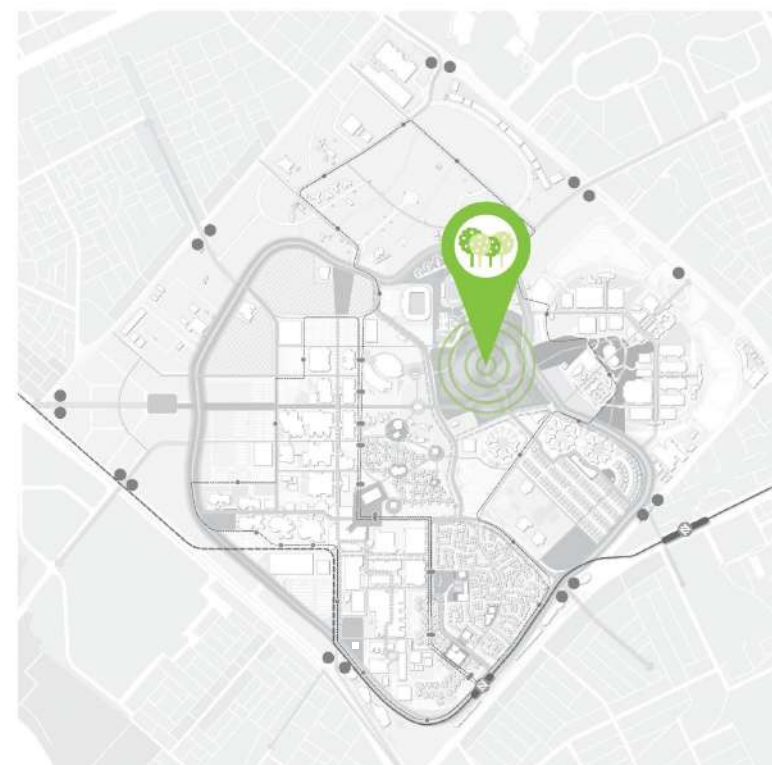
# Landscape Spatial Study

## Central Park

### CIRCULATION DIAGRAM

The layout shows the flow movement that directs the users to the designated space. A Shaded pedestrian pathways to ease the thermal comfort.

- Green Loop Access
- Green Way Road
- Pedestrian Crossing Access
- Park Main Entrances
- Secondary Entrances
- Primary Flow Movement (Pedestrian & Cycle)
- Secondary Flow Movement (Pedestrian)
- Cycle Connection Route



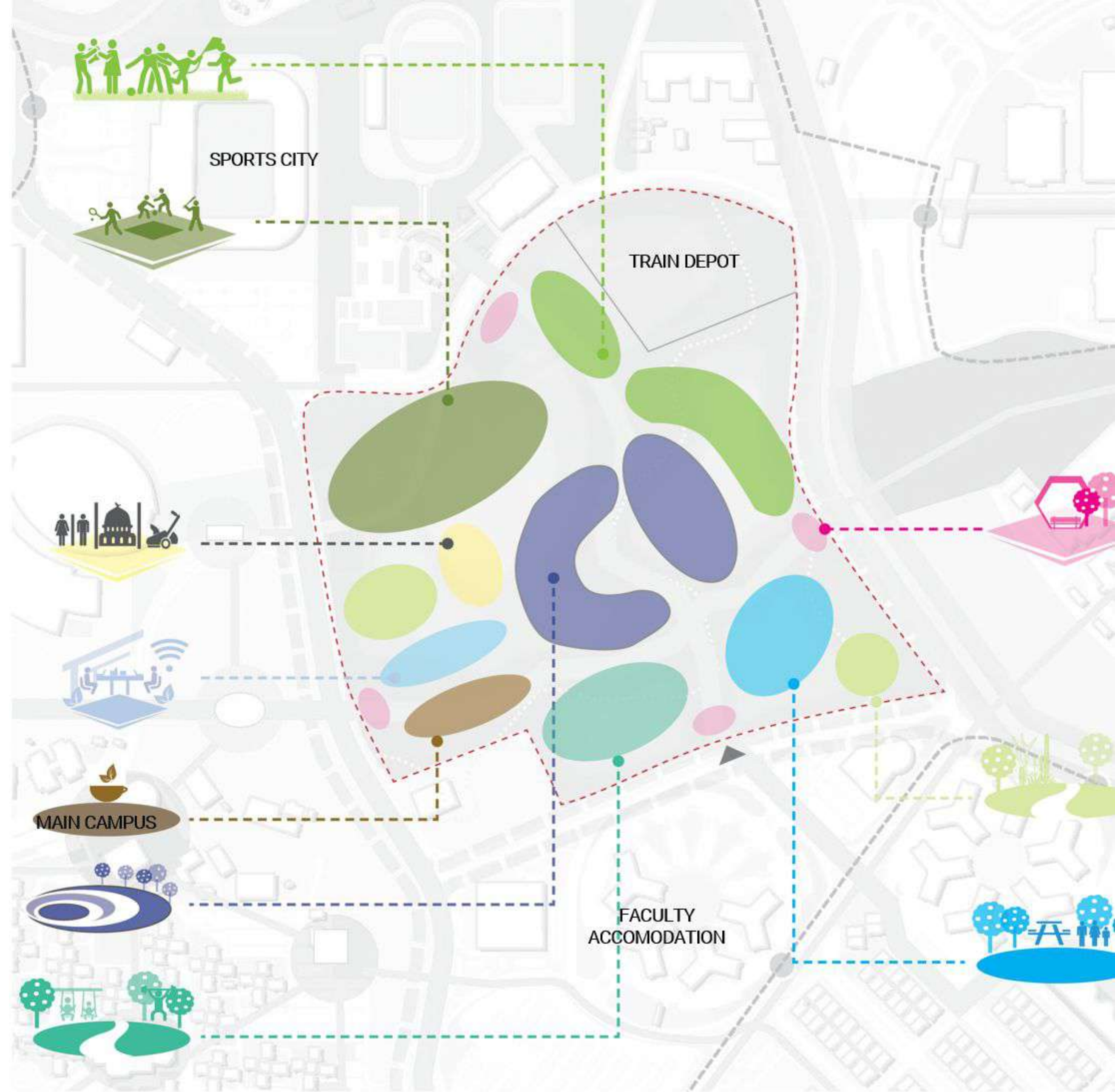
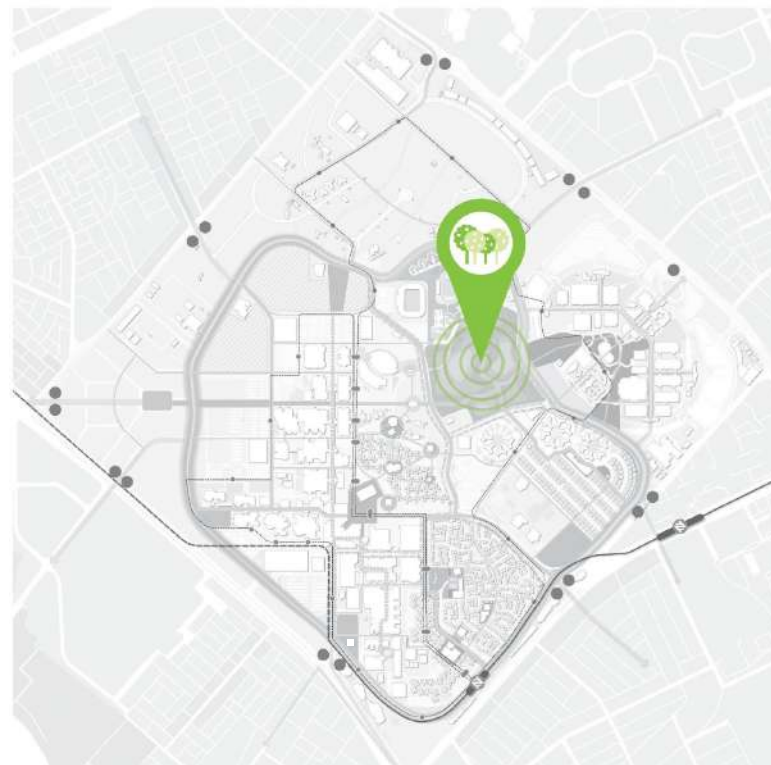
# Landscape Spatial Study

## Central Park

### SPATIAL PROGRAMMING

The spaces of the Central Park shall integrate with the surrounding. The A sports area being the extension of the Sports City, An amphitheatre – for multi-purpose activities shall be located at the centre of the park, an Outdoor Work Space - for the adjacent main campus, a Play Area and Gathering Zone for the adjacent faculty housing.

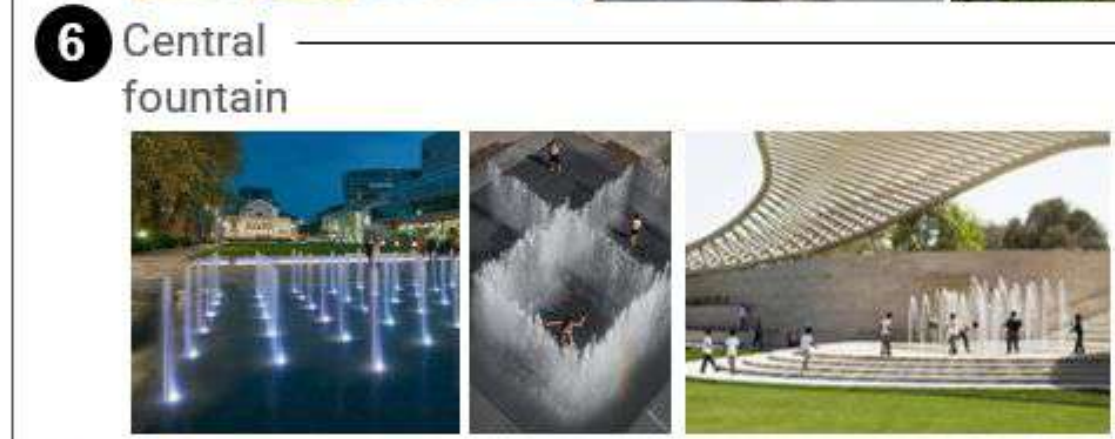
-  Arrival Zone
-  Activity Hub
-  Sports Zone
-  Amphitheatre & Multi-purpose Lawn
-  Gathering & Picnic Zone
-  Outdoor Work Space
-  Amenities Zone
-  Play Area
-  Nature & Tree Groove
-  Kiosk & Spill-out Cafe



# Landscape Spatial Study

## Central Park

- 1 **Pathway shade structure** – Canopy over pedestrian pathways. Patterning could be made similarly to the overarching design the central park envisions (ex. Mashrabiya patterning).
- 2 **Community lawn** – Multi-function lawn for general use – picnic, play & community events.
- 3 **Retail hubs** – Array of food stalls & retail kiosks. Would have external seating space.
- 4 **Fitness track** – Segregated & defined pathway for cycling and jogging, which promotes health and wellness at the campus. Would have mobility hubs for cycle racks & seating spots.
- 5 **Courtyard steps** – Steps leading onto the focal gathering space of the park, which is the central fountain.
- 6 **Central fountain** – Focal point and primary social gathering space of the park. The fountain should be activated further by surrounding the space with retail, F&B stalls and entertainment amenities.



# Masterplan Development

## Priority Development

Priority development zones are identified along the campus' gateways and its new park.

**Total priority development zones (RVC included):**  
542,532 m<sup>2</sup>

Total priority open space:  
373,733 m<sup>2</sup>

**Heritage walk:**  
Development: 151,326 m<sup>2</sup>  
Open space: 29,841 m<sup>2</sup>

**Medical City Expansion\*:**  
Development: 59,696 m<sup>2</sup>  
Open space: 26,127 m<sup>2</sup>

**Central Residential Expansion:**  
Development: 144,672 m<sup>2</sup>  
Open space: n/a

**Central Park:**  
Development: n/a  
Open space: 293,891 m<sup>2</sup>

**Innovation Park:**  
Development: 39,840 m<sup>2</sup>  
Open space: 24,874 m<sup>2</sup>

**Approved RVC projects:**  
Development: 146,998 m<sup>2</sup>  
Open space: n/a

\*Medical City development subject to future study

